



TAPERED HANDLES


BLACK PHENOLIC PLASTIC WITH BRASS INSERT




1/2-13 CL-3-PH
M10 CLM-10-PH




3/8-16 CL-2-PH
M8 CLM-8-PH



1/4-20 CL-1-PH
5/16-18 CL-15-PH
3/8-16 CL-16-PH
M6 CLM-6-PH
M8 CLM-18-PH

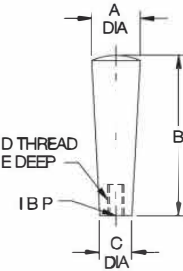


1/4-20 CL-0-PH
5/16-18 CL-05-PH
M6 CLM-06-PH
M8 CLM-08-PH



#10-32 CL-00-PH
M5 CLM-005-PH

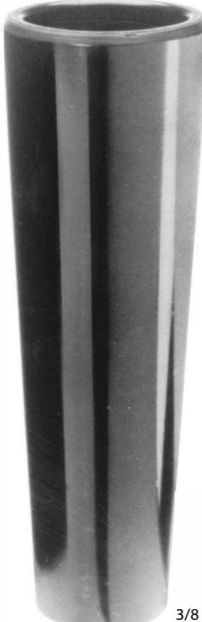
Phenolic — Tapped



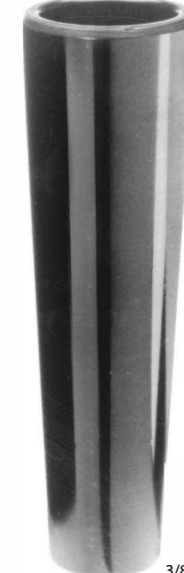
Heavy-duty design that makes an excellent grasp handle or machine shift lever. Molded-in brass insert provides superior thread strength. The solid-plastic through-hole version can be used with a Shoulder Screw as a revolving crank handle. Choice of five handle sizes. Non-standard thread sizes or molded-in studs are available in quantities of 500 and above.

PHENOLIC — TAPPED (INCH & METRIC)


PART NO.	A DIA	B	C DIA	D	E
CL-00-PH	3/4	7/8	3/8	#10-32 M5	5/16
CLM-005-PH					
CL-0-PH	1	1-1/4	1/2	1/4-20 5/16-18	7/16
CL-05-PH				M6	
CLM-06-PH				M8	3/8
CLM-08-PH					
CL-1-PH	1	2-5/8	5/8	1/4-20 5/16-18	7/16
CL-15-PH				3/8-16	1/2
CL-16-PH				M6	
CLM-6-PH				M8	7/16
CLM-18-PH					
CL-2-PH	1-1/8	3-7/8	3/4	3/8-16 M8	5/8 7/16
CLM-8-PH					
CL-3-PH	1-3/8	4-1/2	1	1/2-13 M10	2
CLM-10-PH					



3/8 Dia CL-30-PH

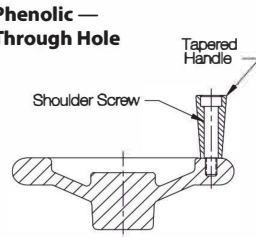
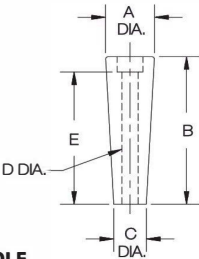


3/8 Dia CL-20-PH



1/4 Dia CL-10-PH

Phenolic — Through Hole

PHENOLIC — THROUGH HOLE

PART NO.	A DIA	B	C DIA	D NOMINAL	D ACTUAL	E
CL-10-PH*	1	2-9/16	5/8	1/4	.251/.256	5/8
CL-20-PH*	1-1/8	3-11/16	3/4	3/8	.380/.385	2-5/8
CL-30-PH*	1-3/8	4-3/32	1	3/8	.380/.390	2-5/8

* This size is solid plastic, without a brass insert.

TAPERED KNOBS

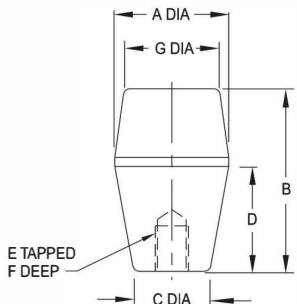
BLACK CUSHION-GRIP PLASTIC WITH BRASS INSERT

Cushion Grip — Tapped



5/16-18 CL-655-TAPK
3/8-16 CL-665-TAPK
1/2-13 CL-685-TAPK

Attractive square design, ideal for lever handles. Made from Cushion Grip plastic, a unique material that feels soft to the touch, comfortable yet rugged. Textured non-slip, non-glare finish. Molded-in brass insert provides superior thread strength. Non-standard thread sizes, molded-in studs, or special colors are available in quantities of 500 and above.



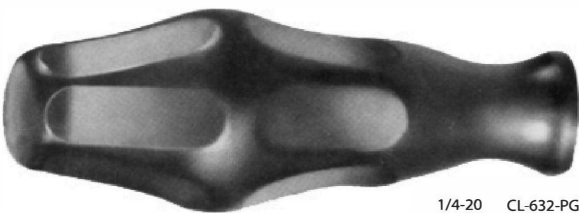
CUSHION GRIP — TAPPED (INCH)

PART NO.	A DIA	B	C DIA	D DIA	E	F	G DIA
CL-655-TAPK	1-1/2	2-1/2	15/16	1-1/2	5/16-18	3/4	1-1/8
CL-665-TAPK					3/8-16	5/8	
CL-685-TAPK					1/2-13		

PALM-GRIP HANDLES

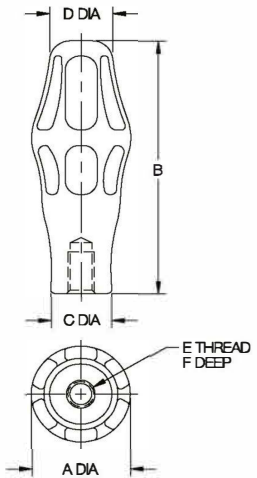
BLACK THERMOPLASTIC WITH BRASS INSERT

Thermoplastic — Tapped



1/4-20 CL-632-PGH
5/16-18 CL-642-PGH
3/8-16 CL-652-PGH

This unique, ergonomically designed handle provides an extremely comfortable grip. Greatly reduces stress on hands, wrists, and arms to help eliminate the risk of repetitive-motion disorders. Textured non-slip, non-glare finish. Molded-in brass insert provides superior thread strength. Non-standard thread sizes, molded-in studs, or special colors are available in quantities of 500 and above.



THERMOPLASTIC — TAPPED (INCH)

PART NO.	A DIA	B	C DIA	D DIA	E	F
CL-632-PGH	1-3/8	3-3/4	7/8	7/8	1/4-20	7/8
CL-642-PGH					5/16-18	5/8
CL-652-PGH					3/8-16	

